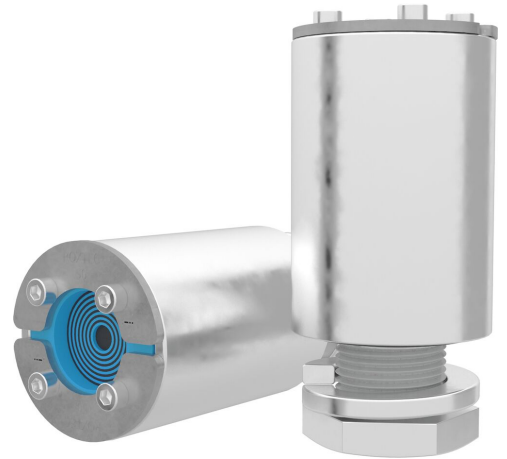




Vedação Roxtec RS com SLA

Vedação do cabo com luva de adaptação para fixação em perfurações.

O Roxtec RS com SLA é uma vedação com luva metálica para um cabo ou tubo. A vedação de entrada é composta por duas metades com camadas removíveis, tornando-a adaptável a cabos de diferentes tamanhos. A luva é rosqueada e está fixada à estrutura com uma contraporca.



- Eficiente em área
- Perfeito para retrofit/manutenção
- Rápido e fácil de instalar

Características do produto



Certificado contra fogo



À prova d'água

Estrutura da instalação



Metal

Tipo de montagem



Aparafusada

Classificações e certificados

Fogo

- A-CLASS de acordo com o Código FTP IMO 2010

Proteção contra vazamento

- Água: 2,5 bar (catastrófico)

Dados de componente de vedação

Componentes de vedação



Kit SLA RS



Vedação RS



Lubrificante Roxtec

Para obter informações detalhadas, acesse [roxtec.com](https://www.roxtec.com).



Kits de passagem pré-configurada

mm/kg



SLA RS 25 AISI316



SLA RS 25 GALV



SLA RS 50 AISI316



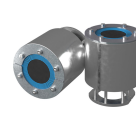
SLA RS 50 GALV



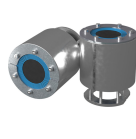
SLA RS 75 AISI316



SLA RS 75 GALV



SLA RS 100 AISI316



SLA RS 100 GALV

| Título | Configuração | Dimensões da abertura Ø | Peso | Art. No. |
|--------------------|----------------|----------------------------|------|----------|
| SLA RS 25 AISI316 | 1x (3.6-12.0) | 21 - 22 | 0.28 | 164386 |
| SLA RS 25 GALV | 1x (3.6-12.0) | 21 - 22 | 0.28 | 164387 |
| SLA RS 50 AISI316 | 1x (8.0-25.0) | 34 - 40 | 1.1 | 164388 |
| SLA RS 50 GALV | 1x (8.0-25.0) | 34 - 40 | 1.1 | 164389 |
| SLA RS 75 AISI316 | 1x (24.0-34.0) | 42 - 49 | 1.8 | 164396 |
| SLA RS 75 GALV | 1x (24.0-34.0) | 42 - 49 | 1.8 | 164397 |
| SLA RS 100 AISI316 | 1x (48.0-53.0) | 80 - 85 | 2.9 | 164404 |
| SLA RS 100 GALV | 1x (48.0-53.0) | 80 - 85 | 2.9 | 164405 |

The product information provided by Roxtec does not release the purchaser of the Roxtec system, or part thereof, from the obligation to independently determine the suitability of the products for the intended process, installation and/or use.

Roxtec gives no guarantee for the Roxtec system or any part thereof and assumes no liability for any loss or damage whatsoever, whether direct, indirect, consequential, loss of profit or otherwise, occurred or caused by the Roxtec systems or installations containing components not manufactured by an authorized manufacturer and/or occurred or caused by the use of the Roxtec system in a manner or for an application other than for which the Roxtec system was designed or intended.

Roxtec expressly excludes any implied warranties of merchantability and fitness for a particular purpose and all other express or implied representations and warranties provided by statute or common law. User determines suitability of the Roxtec system for intended use and assumes all risk and liability in connection therewith. In no event shall Roxtec be liable for indirect, consequential, punitive, special, exemplary or incidental damages or losses.

The Roxtec products are offered and sold in accordance with the conditions of the Roxtec General Terms of Sales. The latest version of the Roxtec General Terms of Sales can be downloaded from <https://www.roxtec.com/en/about-us/about-roxtec/general-terms-of-sales/>

We reserve the right to make changes to the product and technical information without further notice. Any errors in print or entry are no claims for indemnity. The content of this publication is the property of Roxtec International AB and is protected by copyright.

This document was generated on: 2024-04-18